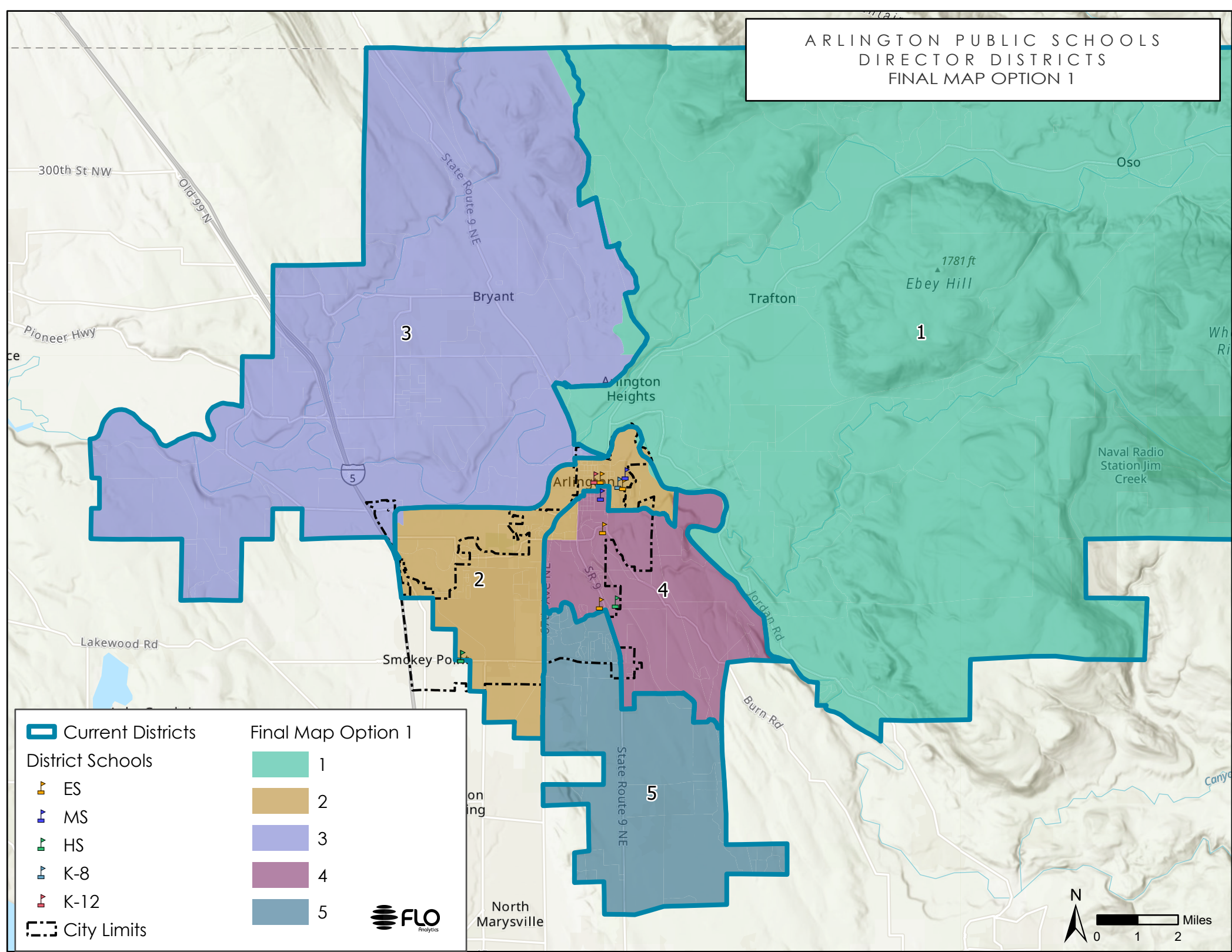


ARLINGTON PUBLIC SCHOOLS  
DIRECTOR DISTRICTS  
FINAL MAP OPTION 1



### Equal Population Criterion

Ideal Population	6,710
Overall Deviation	4.2%
<div> <div>&lt; 5.0%</div> <div>5.0 - 10.0%</div> <div>&gt; 10.0%</div> </div>	

2020 Census P.L. 94-171 Redistricting  
Data Summary Files - Total Population.

### Total Population & Deviation per District

District	Total Population	Over / Under Ideal	Deviation From Ideal
1	6,531	(179)	(2.7)%
2	6,722	12	0.2%
3	6,676	(34)	(0.5)%
4	6,816	106	1.6%
5	6,804	94	1.4%

### Total Population by Race/Ethnicity per District

District	White	Black or African American	American Indian or Alaska Native	Asian	Native Hawaiian and Pacific Islander	Some Other Race	Two or More Races	Hispanic/Latino
1	85.8%	0.4%	1.1%	0.9%	0.2%	0.4%	6.6%	4.7%
2	74.9%	0.6%	1.3%	2.1%	0.5%	0.6%	7.3%	12.7%
3	83.9%	0.6%	1.3%	1.4%	0.2%	0.5%	6.6%	5.5%
4	76.9%	1.0%	1.1%	2.3%	0.5%	0.5%	6.7%	11.0%
5	79.1%	1.1%	0.8%	4.0%	0.2%	0.4%	6.6%	7.8%

2020 Census P.L. 94-171 Redistricting Data Summary Files - Total Population by Race and Hispanic/Latino Origin.

### VAP by Race/Ethnicity per District

District	White	Black or African American	American Indian or Alaska Native	Asian	Native Hawaiian and Pacific Islander	Some Other Race	Two or More Races	Hispanic/Latino
1	87.7%	0.3%	1.1%	0.9%	0.2%	0.5%	5.7%	3.6%
2	78.2%	0.7%	1.3%	2.4%	0.4%	0.6%	6.2%	10.1%
3	86.2%	0.4%	1.2%	1.5%	0.3%	0.5%	5.4%	4.5%
4	80.3%	1.1%	0.9%	2.5%	0.4%	0.5%	5.2%	9.1%
5	81.5%	1.2%	0.9%	4.6%	0.2%	0.4%	4.9%	6.3%

2020 Census P.L. 94-171 Redistricting Data Summary Files - Voting-age Population (VAP) by Race and Hispanic/Latino Origin.

**CVAP by Race/Ethnicity per District**

District	White	Black or African American	American Indian or Alaska Native	Asian	Native Hawaiian and Pacific Islander	Two or More Races	Hispanic/Latino
1	93.6%	0.5%	0.2%	1.3%	0.5%	2.3%	1.4%
2	88.3%	0.5%	0.4%	2.2%	0.2%	4.8%	3.6%
3	93.6%	0.9%	0.1%	0.5%	0.0%	2.9%	2.2%
4	84.0%	2.7%	1.0%	3.8%	0.0%	2.9%	5.8%
5	83.2%	1.2%	1.3%	5.8%	0.9%	3.1%	4.4%

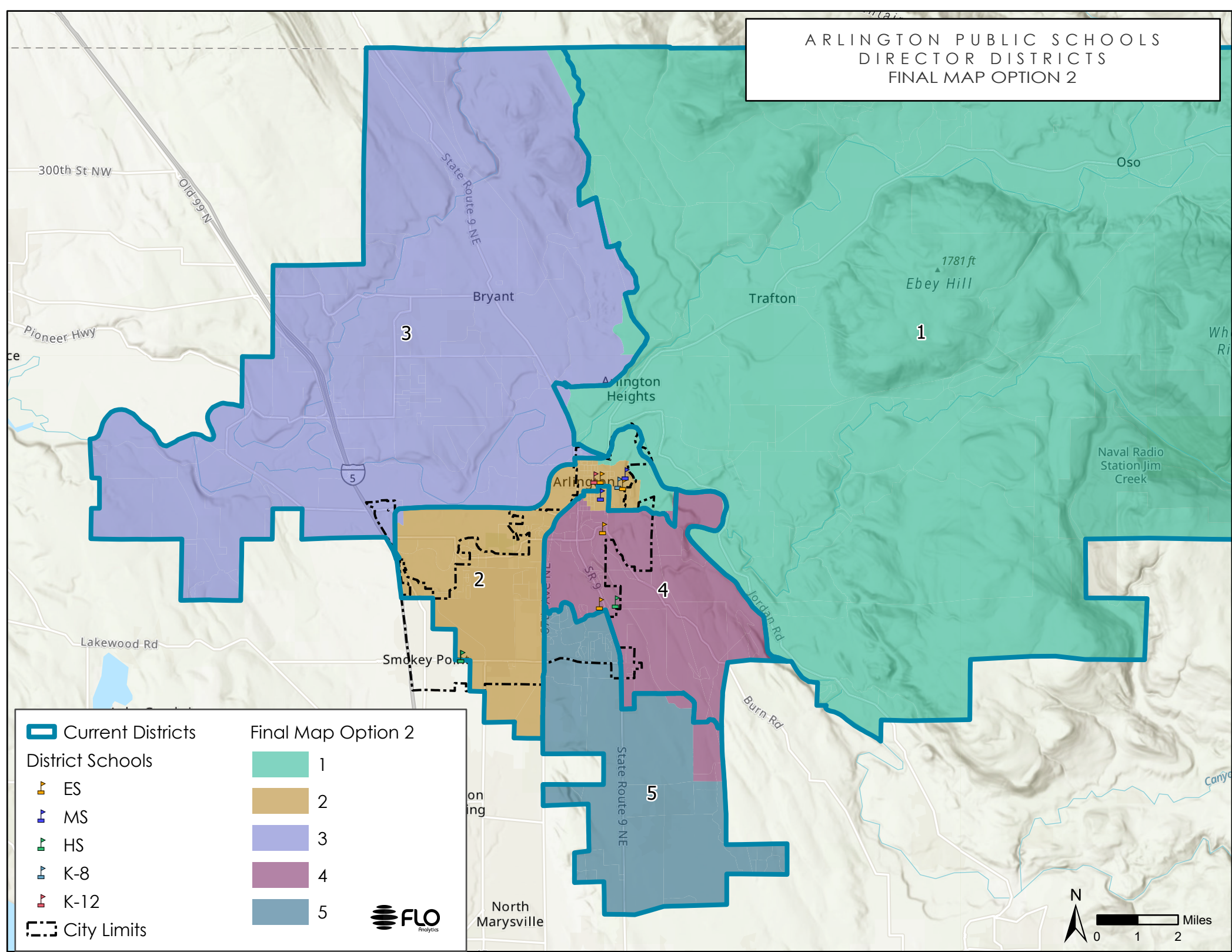
2015-2019 American Community Survey Citizen Voting-age Population (CVAP) by Race and Ethnicity Special Tabulation. Rounding of estimates may lead to summation of race/ethnicity percentages not equal to 100% (+/- 1%).

**Contiguity Criterion**

Are all districts contiguous at more than a point or by bridge or by regular ferry service? **Yes**



ARLINGTON PUBLIC SCHOOLS  
DIRECTOR DISTRICTS  
FINAL MAP OPTION 2



### Equal Population Criterion

Ideal Population	6,710	
Overall Deviation	0.3%	
< 5.0%	5.0 - 10.0%	> 10.0%

2020 Census P.L. 94-171 Redistricting  
Data Summary Files - Total Population.

### Total Population & Deviation per District

District	Total Population	Over / Under Ideal	Deviation From Ideal
1	6,702	(8)	(0.1)%
2	6,720	10	0.2%
3	6,698	(12)	(0.2)%
4	6,708	(2)	0.0%
5	6,721	11	0.2%

### Total Population by Race/Ethnicity per District

District	White	Black or African American	American Indian or Alaska Native	Asian	Native Hawaiian and Pacific Islander	Some Other Race	Two or More Races	Hispanic/ Latino
1	85.3%	0.4%	1.1%	0.8%	0.2%	0.4%	6.7%	5.0%
2	73.9%	0.8%	1.3%	2.2%	0.5%	0.7%	7.5%	13.0%
3	83.9%	0.6%	1.3%	1.4%	0.2%	0.5%	6.6%	5.5%
4	78.1%	0.8%	1.0%	2.3%	0.5%	0.5%	6.4%	10.5%
5	79.1%	1.1%	0.8%	4.0%	0.2%	0.3%	6.7%	7.8%

2020 Census P.L. 94-171 Redistricting Data Summary Files - Total Population by Race and Hispanic/Latino Origin.

### VAP by Race/Ethnicity per District

District	White	Black or African American	American Indian or Alaska Native	Asian	Native Hawaiian and Pacific Islander	Some Other Race	Two or More Races	Hispanic/ Latino
1	87.3%	0.3%	1.2%	0.9%	0.2%	0.5%	5.7%	3.9%
2	77.7%	0.9%	1.3%	2.5%	0.5%	0.7%	6.3%	10.2%
3	86.2%	0.4%	1.2%	1.5%	0.3%	0.5%	5.4%	4.5%
4	81.1%	0.9%	0.8%	2.5%	0.3%	0.5%	5.0%	8.8%
5	81.5%	1.2%	0.9%	4.7%	0.2%	0.4%	4.9%	6.3%

2020 Census P.L. 94-171 Redistricting Data Summary Files - Voting-age Population (VAP) by Race and Hispanic/Latino Origin.

**CVAP by Race/Ethnicity per District**

District	White	Black or African American	American Indian or Alaska Native	Asian	Native Hawaiian and Pacific Islander	Two or More Races	Hispanic/Latino
1	93.4%	0.5%	0.2%	1.3%	0.5%	2.5%	1.5%
2	87.7%	0.5%	0.8%	2.1%	0.2%	4.7%	4.0%
3	93.6%	0.9%	0.1%	0.5%	0.0%	2.9%	2.2%
4	84.8%	2.6%	0.5%	3.9%	0.0%	2.9%	5.2%
5	83.1%	1.2%	1.3%	5.8%	0.9%	3.1%	4.5%

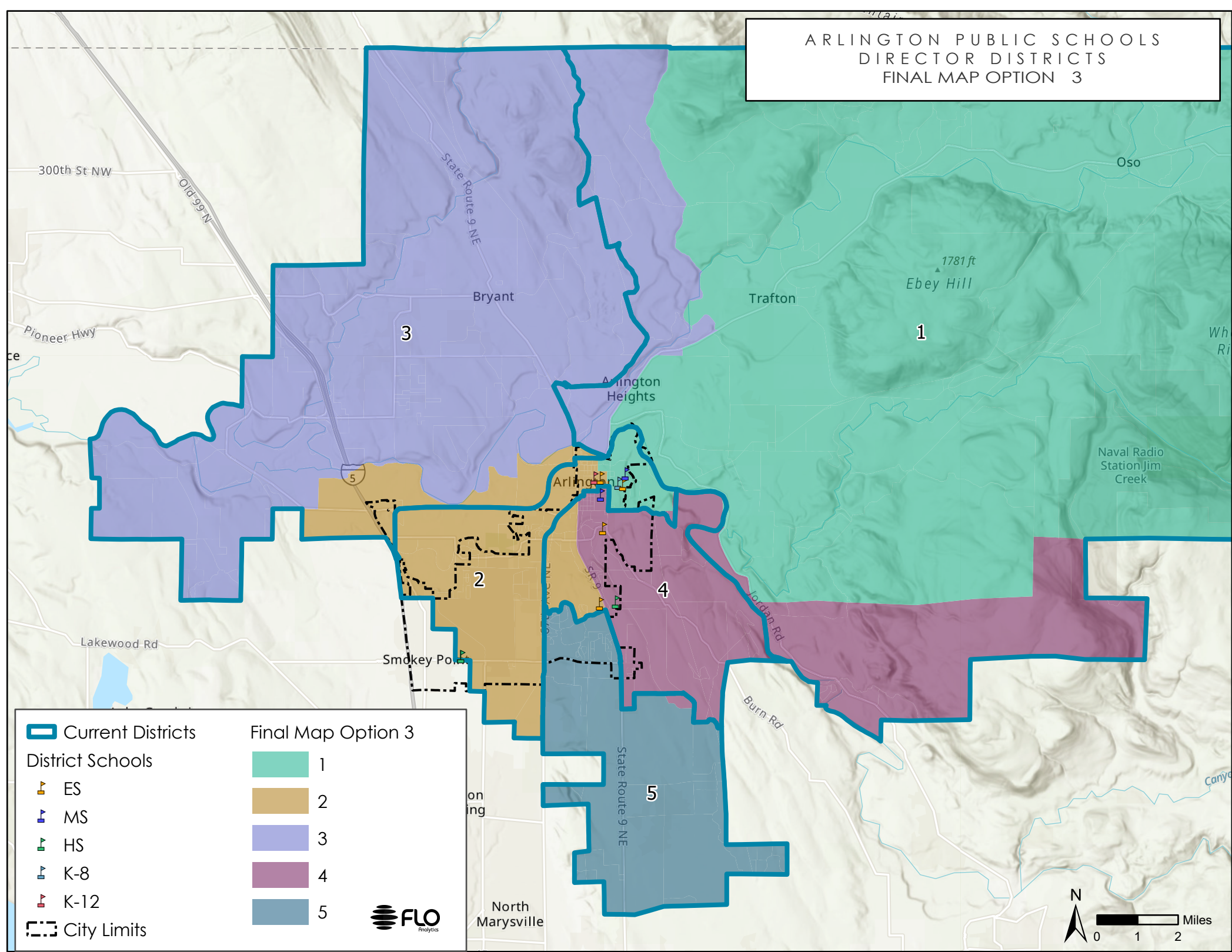
2015-2019 American Community Survey Citizen Voting-age Population (CVAP) by Race and Ethnicity Special Tabulation. Rounding of estimates may lead to summation of race/ethnicity percentages not equal to 100% (+/- 1%).

**Contiguity Criterion**

Are all districts contiguous at more than a point or by bridge or by regular ferry service? **Yes**



ARLINGTON PUBLIC SCHOOLS  
DIRECTOR DISTRICTS  
FINAL MAP OPTION 3



**Equal Population Criterion**

Ideal Population	6,710
Overall Deviation	2.3%
<div> <div>&lt; 5.0%</div> <div>5.0 - 10.0%</div> <div>&gt; 10.0%</div> </div>	

2020 Census P.L. 94-171 Redistricting  
Data Summary Files - Total Population.

**Total Population & Deviation per District**

District	Total Population	Over / Under Ideal	Deviation From Ideal
1	6,637	(73)	(1.1)%
2	6,657	(53)	(0.8)%
3	6,699	(11)	(0.2)%
4	6,788	78	1.2%
5	6,768	58	0.9%

**Total Population by Race/Ethnicity per District**

District	White	Black or African American	American Indian or Alaska Native	Asian	Native Hawaiian and Pacific Islander	Some Other Race	Two or More Races	Hispanic/ Latino
1	85.0%	0.4%	1.1%	1.1%	0.2%	0.3%	6.3%	5.6%
2	74.0%	0.7%	1.3%	2.2%	0.6%	0.6%	7.9%	12.7%
3	84.6%	0.6%	1.4%	1.5%	0.2%	0.5%	6.3%	4.9%
4	77.6%	0.9%	1.0%	2.0%	0.4%	0.6%	6.6%	10.8%
5	79.2%	1.1%	0.8%	4.0%	0.2%	0.3%	6.6%	7.7%

2020 Census P.L. 94-171 Redistricting Data Summary Files - Total Population by Race and Hispanic/Latino Origin.

**VAP by Race/Ethnicity per District**

District	White	Black or African American	American Indian or Alaska Native	Asian	Native Hawaiian and Pacific Islander	Some Other Race	Two or More Races	Hispanic/ Latino
1	86.9%	0.3%	1.1%	1.2%	0.2%	0.4%	5.5%	4.4%
2	77.6%	0.8%	1.2%	2.4%	0.5%	0.7%	6.8%	10.1%
3	86.7%	0.3%	1.3%	1.5%	0.3%	0.6%	5.2%	4.1%
4	81.1%	1.1%	0.9%	2.2%	0.4%	0.6%	5.0%	8.8%
5	81.6%	1.2%	0.9%	4.6%	0.2%	0.4%	4.9%	6.2%

2020 Census P.L. 94-171 Redistricting Data Summary Files - Voting-age Population (VAP) by Race and Hispanic/Latino Origin.



**CVAP by Race/Ethnicity per District**

District	White	Black or African American	American Indian or Alaska Native	Asian	Native Hawaiian and Pacific Islander	Two or More Races	Hispanic/Latino
1	93.1%	0.8%	0.2%	1.4%	0.5%	3.0%	1.0%
2	89.2%	0.0%	0.3%	2.3%	0.2%	3.9%	4.1%
3	93.5%	1.0%	0.1%	0.4%	0.0%	3.2%	2.0%
4	83.7%	2.8%	1.1%	3.8%	0.0%	2.7%	5.9%
5	83.2%	1.2%	1.3%	5.8%	0.9%	3.1%	4.4%

2015-2019 American Community Survey Citizen Voting-age Population (CVAP) by Race and Ethnicity Special Tabulation. Rounding of estimates may lead to summation of race/ethnicity percentages not equal to 100% (+/- 1%).

**Contiguity Criterion**

Are all districts contiguous at more than a point or by bridge or by regular ferry service? **Yes**